

Flat 3, Reeds Chapel, Orphanage Road

£475,000

🛏️ 2 🚿 2 🚗 1

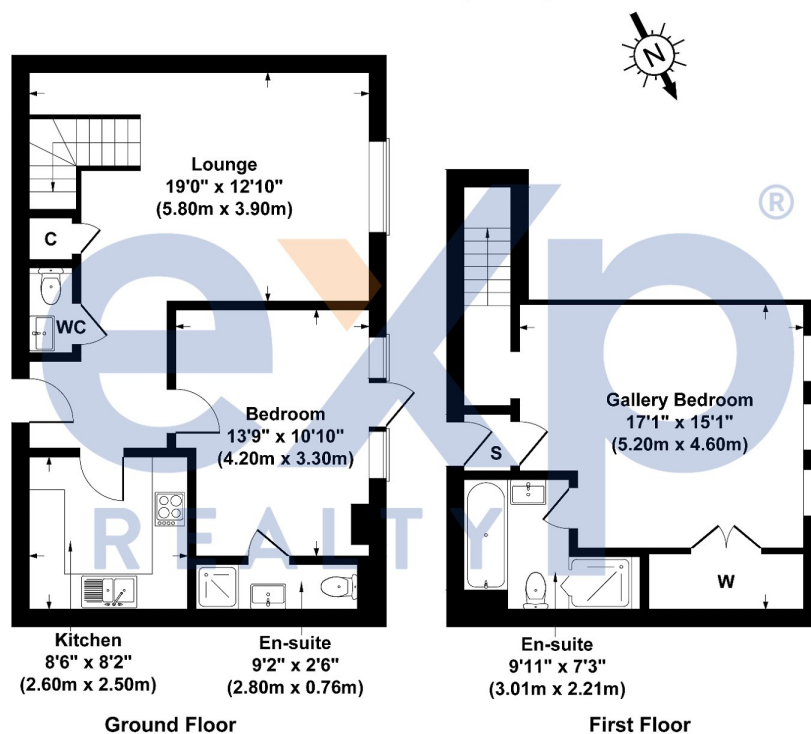


Superb two bedroom, two bathroom split level apartment, set within a beautiful neo-Gothic Grade II listed former chapel on the sought after Reeds Development, boasting galleried accommodation with breath-taking stained glass windows, exposed beams and double height ceiling, as well as a private patio garden opening onto landscaped communal gardens. The property provides bright and spacious, well-planned accommodation with a wealth of original features and historic appeal. Features include an impressive reception room with exposed brickwork and imposing arched church window, well equipped kitchen, galleried master bedroom with en-suite, further en-suite bedroom, under-floor heating to the ground floor, ample inbuilt storage, residents' parking, and share of the freehold.

Key Features

- Superb Two Bedroom Two Bathroom Split Level Apartment
- Historic Location
- Impressive Reception Room with Double Height Ceiling
- Residents' Parking
- Close to Watford Junction and Amenities
- Grade II Listed Neo-Gothic Chapel Conversion
- Stunning Stained Glass Windows and Exposed Beams
- Private Patio Garden Opening onto Communal Gardens
- Share of Freehold
- Please quote LR0444

3 Reeds Chappel , Orphanage Road , Watford WD24 4QH
Gross Internal Area 915 sq ft /85 sq metres



All measurements of walls, doors, windows, fittings and appliances, including their size and location, are shown as standard sizes and therefore cannot be regarded as a representation by the seller.